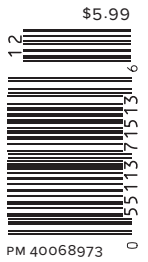


WL

Winter Warmth

WESTERN LIVING // DEC 2017

WESTERNLIVING.CA



A Heritage Hall
Becomes a Nordic-Cool
Home in Northern B.C.

Curves! Colour!
Maximalism! Top
Trends for 2018

Kimberley &
Park City: Your New
Favourite Ski Spots

PLUS Holiday Recipes!
Easy Updates on Classic
Christmas Dishes

DECEMBER 2017



BARELY THERE DRAPERY

» “People are really loving the airy, ethereal effect that yards of sheer fabric can create,” says Calgary interior designer Reena Sotropa. “Wall-to-wall sheers will finish off a space beautifully without making it feel too stuffy. This, in combination with the soft, diffused light that results, makes sheer drapery a winner.”



The Right Filter

Design firms McIntyre Blis (above), Elena Del Buccia Design (left) and Amanda Hamilton Design (right) demonstrate how sheer drapes diffuse light and add a touch of effortless luxury.



“Glass pieces—which will continue to be very popular through 2018—are presented in rich, warm, layered forms.”

RACHEL MARTINUK,
STE. MARIE ART AND
DESIGN, VANCOUVER

TRANSLUCENT TEXTURE

Smoked glass and see-through accessories and lighting inject that trending '70s vibe.



Smoke on the Water

This Bilbao coffee table (from \$769) is black-grey glass on concrete for effortless cool. boconcept-vancouver.ca

Double Bubble

It's a marriage of flirty pink tints and sci-fi with Tom Dixon's Bump series (from \$95). informinteriors.com

Nothing to Hide

We love the subtle texture of these mouth-blown glass bowls (\$385) by German-based Guaxs. providehome.com

McIntyre Blis, Gary Campbell, Elena Del Buccia, Lori Andrews

Hot for Curves



Round Figures

Botanist restaurant by Ste. Marie Art and Design (top) pairs curved leather banquettes with rounded Tacchini chairs (from \$1,200). bloomfurniturestudio.com

Light Deco

“The '20s and '30s are showing up in more relaxed forms,” says Project 22 designer Denise Ashmore. The Gubi Beetle chair (\$630) below has a sympathetic shape that crosses eras and works with lots of styles. informinteriors.com

CIRCLE BACK

» Going curvilinear evokes a sense of softness in textiles, colour palette and form, says the team at Frank Architecture. A major movement in restaurant design, we'll see more of this Art Deco-inspired seating, lighting and furniture spilling over into interiors in a big way.

Botanist, Emma Peier



AROUND THE BEND

Get ready for coffee tables with organic shapes, curved sofas and a world of rounded accessories.



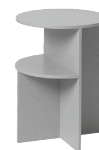
Serving It Right

No squares at this dinner party with the Blu Dot Delicious Carrara marble serving trays (from \$162). kitinteriorobjects.com



Little Nest

Christophe Delcourt's BLU oak nesting tables (\$72-240) show off soft lines with a handmade quality. avenue-road.com



Sculpture Club

Designed by Toronto's MSDS Studio, the Muuto Halves table is Picasso-style cubic perfection. kitinteriorobjects.com



Ahead of the Curve

Velour and soft edges on the Rolf Benz Tondo sofa (\$14,300) make for one smooth ride. gingerjarfurniture.com

Luxurious Floors



Ciao, Bellissima
In this 1920s church-turned-modern-day artist's studio designed by Vancouver's Hodgson Design Associates (above), terrazzo floors tie all time periods together.

TIME FOR TERRAZZO

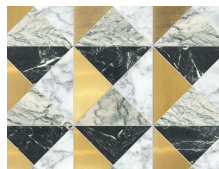
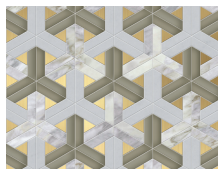
» The 1970s still hail as a major design influence, and with them, comes terrazzo. "People may recall seeing it in more commercial applications like schools and malls," says Calgary designer Elena Del Buchia. "With new technology there are so many fun colour variations and applications—it's definitely worth exploring if you are after a more whimsical '70s look, and you can apply it to walls, countertops or floors."



Hodgson Design: Carlo Ricci, Jane Dabrowski, Tazzy Ayfan, Reena Sotropa, Phil Crozier

Rich Woods

The future of woods is matte, oiled, warm and decidedly darker, as seen in this Ladner home from architect Jennifer Heath and interior designer Jane Dabrowski (right).



The Midas Touch
Geometric tiles will continue to floor us in 2018, but regal gold and brushed-brass inlays are kicking high-end rooms into next-level. To get the look, check out the Odyssee collection (from \$190 per square foot) from Montreal-based Mosaic Surface—there's a glam tile motif for every style and space. mosaicsurface.com



We've Got the Blues
In this living room, Reena Sotropa layers deep and vibrant sapphire jewel tones throughout, which makes the brass-and-marble Jonathan Adler coffee table pop.

THE NEW MONOCHROMATIC

» Layering tints and shades for that tone-on-tone look creates rich interiors in any singular colour palette—from saturated and sumptuous jewel tones to dusty pastels and greys. Here are three designers who are doing it right.

Tone on Tone

Grey All Day

From the dusty silver greens to the delicate tonal variations from floor to wall to coffee table—this Kelly Deck Design space shows grey isn't going anywhere.



"Colour palettes are moving toward soft pastels with poignant hits of jewel tones—like emerald, amethyst or ruby."

KELLY DECK,
KELLY DECK DESIGN,
VANCOUVER

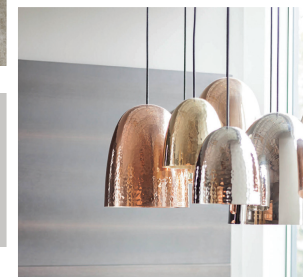
Pretty in Pinks

Even bold colours like pink operate as neutrals in more subdued, dusty tones, like in this serene bedroom from Medina Design House.



WARMED-UP GREYS

» Grey and its counterpart "greige" are holding strong, but designers are now heating up these cool looks by incorporating heritage red brick, rich wood floors and wood furniture, and warm metals like copper, gold and brass. *Stanley suspension pendants (right) in hammered copper, brass and plated nickel (from \$830), lightform.ca*



Make It Bold

MAXIMALISM

» “The pendulum is swinging in the opposite direction of clean and minimal,” says Vancouver interior designer Karin Bohn of House of Bohn. “Where clean and soft spaces were once celebrated, now spaces will be layered with textured fabrics, interesting materials and sculptural shapes.”



Shoot the Moon
This Paul Lavoie–designed living room is proof you can push colour (blues, pinks and purples), pattern and embellishments to the edge without losing cohesiveness, thanks to subtle repetition.

SHOWSTOPPERS

Enough playing it safe, this emerging ethos is about embracing the unusual, the distinct and the standouts that dare to make a statement.



Dressing Up
Modern chevron rattan looks positively 3D in this high-gloss black Carlo wood nightstand (\$599). [cb2.com](#)



Plant Forward
The Bloc Studios Posture vase (from \$305) is pushing the boundaries of planter design. [flur.ca](#)



Rock Out
Every mesmerizing edge is illuminated in the sculptural white Rock suspension pendant (\$1,096). [lightform.ca](#)



Art Attack
Set the scene with this Lichtenstein-inspired pop art wallpaper, You Think? Red. [areaenvironments.com](#)

Paul Lavoie, Jamie Breemer

Reena Sotropa, Phil Crozier, Paule Dhillon, Tracey Aylon



To Infinity
“It” designer Jaime Hayon’s Leafo lounge combines futuristic quirk with modern styling (\$4,091). [informinteriors.com](#)

Full-Press Pattern



“I think paisley’s coming back into fashion. Mark my words...”

CRAIG STANGHETTA,
STE. MARIE ART AND DESIGN,
VANCOUVER

FRONT AND CENTRE

» Pattern makes a move from accents to focal points in fabric, tile and wallpaper. (And don’t be afraid to mix and match!) “People seem to have a larger appetite for pattern in general,” says Sotropa, and are using hits of heavy pattern in the same way they had previously considered the once ubiquitous “feature wall.” **///**

Power Play
Natural stone plays with funky patterned drapes in a kindred colourway for a Reena Sotropa–designed bedroom look that’s anything but boring (top right).

Grid Lock
Two 3D panels of honeycomb break up an expansive wall, add visual interest and inject a touch of refinement to this Vancouver home from designer Paule Dhillon (bottom right).

